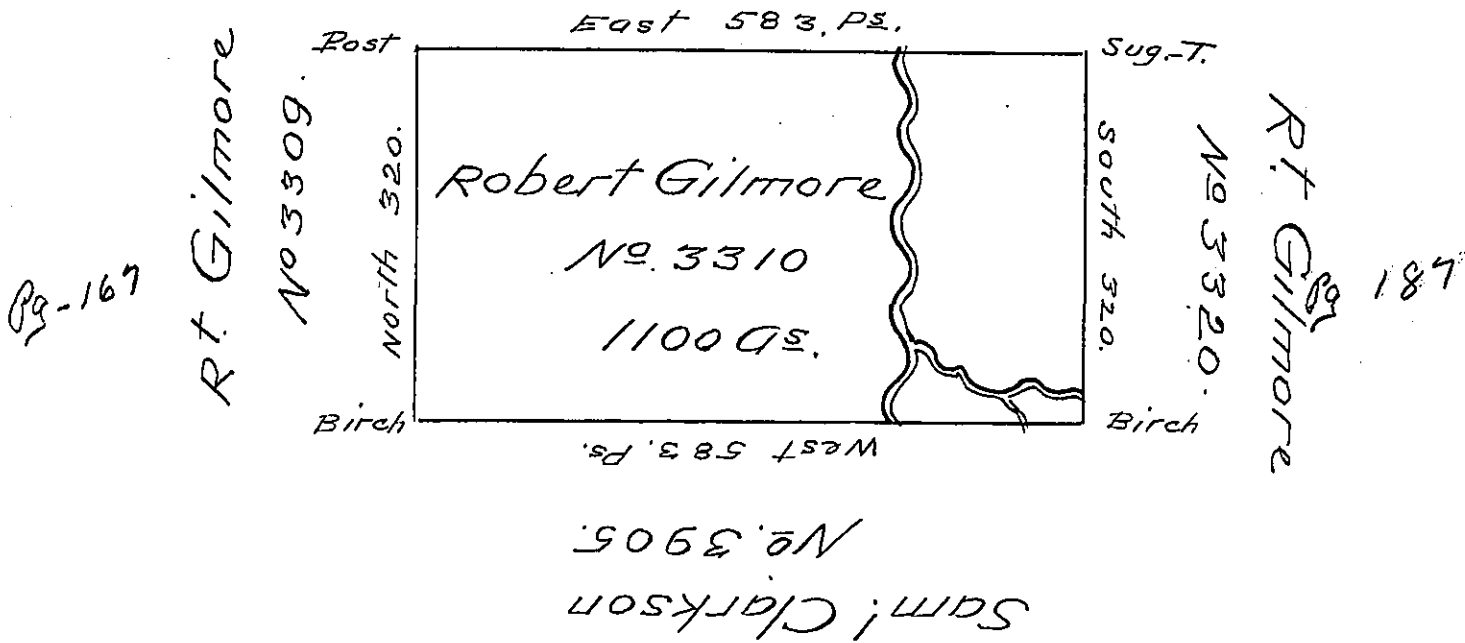


Robt. Gilmore
No 3313



Situate on the Middle Branch of -
 Ischunuangwandt Creek Six Miles South of
 of the State Line in the last Purchase Dis-
 trict No 4. Surveyed July the third 1793 in
 Pursuance of a Warrant to Robert Gilmore
 No 3310 Dated the fourteenth day of December
 1792 for 1000 Acres.

Containing Eleven hundred acres and the
 usual allowance of Six pr Ct for Roads.

Pr. James Hunter D.S.

To Daniel Brodhead Esq^r S.G.

July 3^d.

IN TESTIMONY that the above is a copy of the original remaining on file in
 the Department of Internal Affairs of Pennsylvania, made
 conformably to an Act of Assembly approved the 16th day of
 February, 1833, I have hereunto set my Hand and caused
 the Seal of said Department to be affixed at Harrisburg,
 this Twenty sixth day of October 1904.

Joseph P. Brown
 Secretary of Internal Affairs.